

# NUMBAT NEWS

2nd April 2025

Ph: 98 872 000

Email: pingelly.ps@education.wa.edu.au

Website: www.pingellyps.wa.edu.au

Facebook: PingellyPS

Address: 39 Park Street, Pingelly WA 6308



## IMPORTANT DATES

### Friday 11th April

Good standing reward day  
Easter Hat Parade

### 12th-27th April

School Holidays

### Monday 28th April

SDD – No Students

### Tuesday 29th April

Students return to school

### Tuesday 29th April

School ANZAC service 10am  
@ the flag pole, Morning tea  
served afterward

### Thursday 8th May

P&C Mothers day stall

### Friday 16th May

Cross Country

### Thursday 22<sup>nd</sup> May

National Simultaneous  
Storytime

Kaya Pingelly families,

Term 1 has flown by and what a busy term it has been. Pre-Primary have been very busy completing their On-Entry Assessments. This one-to-one assessment enables teachers to plan for the learning needs of every child. Our Year 3 and 5 students completed their NAPLAN testing (National Assessment Program Literacy and Numeracy). NAPLAN results allow parents/carers and educators to see how students are progressing in literacy and numeracy over time, individually, as part of their school community, and against national standards. Well done to all the students who completed the tests.

Our teachers have been busy with Term 1 assessments and using the data to inform teaching and learning and setting individualised learning goals for our students. This year our teachers will be collating all assessments into an individual student file so that at any point parents/ carers would like to view the results and/or make a time to discuss student progress, the results and assessment forms are readily available. Our school strives to be open and transparent about student achievement and progress. Please make a time to meet with our amazing teachers.

Our Year 3/4 Yongka class put on an exceptionally humorous assembly item that had us all smiling along with their rendition of the very funny “Big Foot”. Amazing effort went into their costumes, and you could see the joy in the students when performing.

Our ANZAC service will be held on the first day back in Term 2, Tuesday 29<sup>th</sup> April at 10:00am. We have representatives from the Pingelly RSL joining us to support our service. Morning Tea will follow our service in the library, and all are welcome to attend.

Just a reminder that our Staff Development Day is held on the first Monday of each term. Monday 28<sup>th</sup> April will see our staff head over to Narrogin PS as we combine schools for a Trauma Informed Practice professional development day. This will provide staff with a deeper awareness of the types of trauma and its triggers, a greater understanding of the effects on behaviour approaches, preventing re-traumatisation and de-escalation preferences.

Wishing our wonderful families a very Happy Easter.

Warm regards,  
Jo Newhouse



# KIDS WITH CANCER FOUNDATION FUNDRAISER

## Easter Raffle – We Need Your Help to Make it Egg-cellent!

Our Student Leaders would like your help in putting together an Easter Basket (or two) to raffle off so they can raise money for Kids with Cancer Foundation.

**How You Can Help:** we're seeking your generous support in the form of donations for our raffle.

### Here's what we're looking for:

- Chocolates: Easter-themed treats or any sweet delights
- Crafts: handmade or store-bought items that capture the Easter spirit
- Easter-Related Items: decorations, toys, or any creative ideas

**Donation Drop-off Location:** school office during school hours

**Deadline:** please ensure all donations are received by Thursday morning 10th April.

**Tickets** can be purchased from the front office and our Student Councillors will go class to class throughout the week. Tickets for the raffle are \$2 each.

The raffle will be drawn at a special **Easter Hat Parade at 9am on Friday 11 April** in the Assembly Area.

Thank you for your continued support in making the Pingelly Primary School Easter Raffle a hopping success!

## Great Things Happen at PPS

We would love your help in any of our projects. Our students love having you and our teachers appreciate all the help!



**Nature Play Ground -** demolition of  $\frac{1}{2}$  of the court will take place over the holiday break. This is the start of the project with a gradual implementation of equipment.

**Good News Story -** Our school was selected as the Good News for the Wheatbelt Region. This was sent through to Central Office.

**Project Base Learning and Extension** time every Friday afternoon for our Year 3-6. This Semester the focus is: **History of Pingelly Physical Education Extension Garden Club**

**Kitchen Garden Grant** for \$5000 received. Students from year 3 to 6 working in this space as part of their Project Based Learning.

**Noongar Bush Tucker Garden.** Working alongside our Community Garden Club to create a community garden and to beautiful our school through a cultural lens.

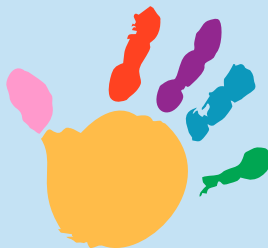
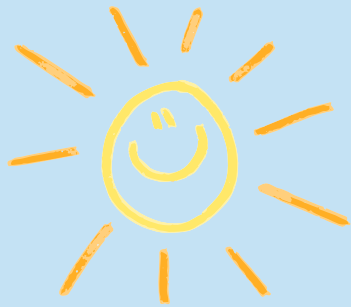




# Nyingarn Class Room - Kindy



This term our Kindergarten students have been really drawn to sensory play. These activities engage their senses to support the children's development, while also being lots of fun. Some favourites have been our kinetic sand and rice ocean and beach, water beads, adding water to the sandpit, and of course, play dough. Research tells us there are numerous reasons sensory play is important for early childhood development. These activities support children's problem-solving, language development and creativity. They also offer opportunities to develop fine motor skills like pinching, sprinkling, squeezing and pouring which will help the children as they learn to colour, draw, paint and write. Sensory play also often helps children to regulate, as it has a calming effect, especially when it is solitary. When the play involves others however, it also offers lots of social interactions, requires sharing and turn-taking, and of course communication.





# EXTENSION

The Maths Extension group has been working hard during their sessions, and they are making significant progress in their problem-solving skills.

We are enrolled to participate in the Bebras Challenge next week on Thursday, April 10. Bebras is a fun and engaging computational thinking challenge for students in Years 3 to 12. It is an international challenge that involves over 2.9 million students from 60 countries.

We are also enrolled in the Have Sum Fun Competition later in the year. Have Sum Fun Online (HSFOL) is designed to foster mathematical problem solving for students in Years 3-10 across Australia. School teams of four students race against the clock to complete each round of the competition against other school groups around Australia.

We are looking forward to seeing the students in our Maths Extension Group continue to challenge themselves and further develop their mathematical skills this year!





# CERTIFICATES OF COMMENDATION

*Congratulations to all our worthy Certificate of Commendation recipients!*



Room 2 - PP/Yr 1	Savannah, Jethro, Kate & Harvey
Room 15- Yr 1/2	Bailey, Charlie, Ava-Leigh & Amayah
Room 14- Yr 2/3	Zayne & Seth
Room 12- Yr 5/6	Tristan L, Josiah, Lily & Lucy





## **PBS Focus for Weeks 9 and 10: Initiative in the Playground**

### **We will make safe choices with equipment.**

- Use equipment correctly.
- Use equipment for their intended use (eg use the correct ball for batting games, soccer and footballs are the only balls for kicking).
- Balls are used on the basketball court or bottom oval during break times (unless a teacher has organised a ball game in the Undercover Area).
- Follow the rules of the game.

### **We will seek teacher assistance when required and report any issues.**

- If someone is hurt, speak to a staff member straight away.
- If you cannot solve the problem, speak to a staff member straight away (during the break time so that it can be resolved).
- If you see something broken, report it to a teacher.

### **We will wear a hat.**

- Wear a bucket or broad-brimmed hat.
- Wear a hat whenever outside (eg sport, break times).



**STRIVE**





# Easter Hat Parade



Students are encouraged to wear an Easter hat on the last day of term, Friday 11<sup>th</sup> April. There will be a parade @ 9 am in the undercover area to show off all the wonderful hats. All welcome!







## Easter Egg Competition

Our Student Councillors are organising a 'GUESS HOW MANY' Easter egg competition. Students can guess how many eggs they think are in the jar, the closest guess will win the jar. Each guess is \$1.00, this will take place during weeks 9 & 10.

In addition, students will also be able to purchase tickets for \$2.00 to win an Easter Hamper. We are requesting donations of Easter Eggs or Bunnies etc, for the hamper. Winners will be drawn on the last day of term. All money raised will go to the Kids with Cancer Foundation.





### POSITION AVAILABLE COMMENCING (28 APRIL 2025)

## SCHOOL BUS DRIVER

**Qualifications Required**

- Be aged over 24 years of age.
- Hold an LR driver's licence
- Have a current PTD Authorisation
- Working with Children Check
- Federal Police Clearance
- HLTAID003 First Aid Certificate

Base wage is \$40,000 annually plus superannuation Monday to Friday - split shift (morning & afternoon school pick up and drop off) 40 weeks a year - school holidays off.

We are currently seeking expressions of interest from anyone who holds the required qualifications listed, or is looking to obtain them to gain this position.

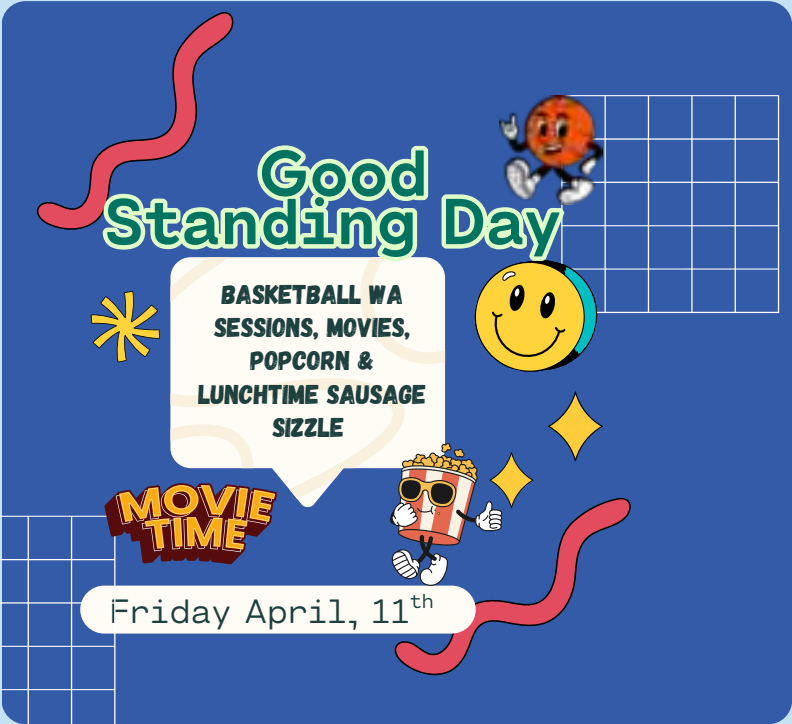
The perfect candidate will enjoy early mornings, have safe and confident driving skills and enjoy the rewards of getting children to and from school safely on a daily basis.

Financial assistance to gain these qualifications and retain them throughout your employment forms part of your work contract

This position is suitable as a job share role.

Please Submit Your CV to  
[james@regionaltransit.com.au](mailto:james@regionaltransit.com.au)

Phone James McCabe  
**0428 287 028**



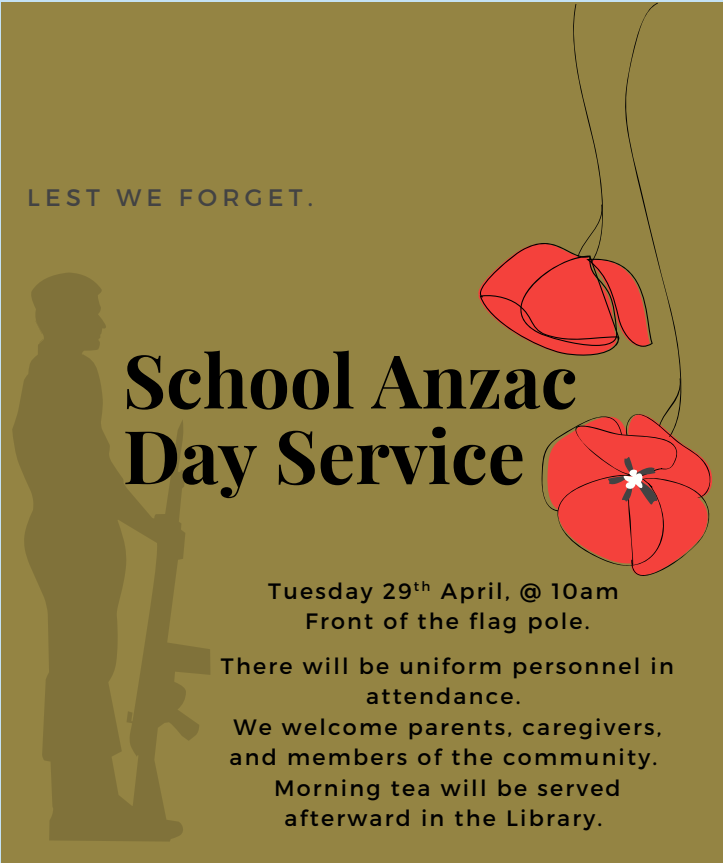
## Good Standing Day

BASKETBALL WA SESSIONS, MOVIES, POPCORN & LUNCHTIME SAUSAGE SIZZLE

MOVIE TIME

Friday April, 11<sup>th</sup>

LEST WE FORGET.



## School Anzac Day Service

Tuesday 29<sup>th</sup> April, @ 10am  
Front of the flag pole.

There will be uniform personnel in attendance.

We welcome parents, caregivers, and members of the community.  
Morning tea will be served afterward in the Library.